

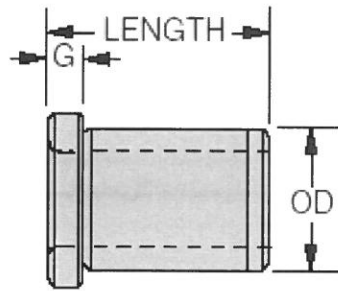
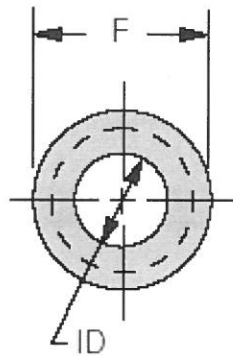
1/2 to 2-1/4" +.020/+0.015

To order liner bushings with an unground OD, add "U" on Price & Availability screen:

HL-32-16 Standard liner bushing
HL-32-16U Standard unground liner bushing

Material

1144 Stressproof steel, heat treated to achieve Rc 62-64 ID hardness. Other materials are available by special order. DFARS and RoHS compliant.



LANGU

Head Liner Bushings (HL)

Standard Sizes



☎ 314-647-6200

✉ info@carrlane.com

Head Liner Bushings (HL)

What is this?

Drill-Jig Bushings

Product Information



Head Liners are similar to L bushings, but with a head to resist heavy axial loads. HL liners are permanent bushings used to hold renewable drill bushings. The liner's ID has a precise sliding fit with the renewable bushing's OD. The liner accurately locates the renewable bushing and protects the jig plate from wear and damage caused by frequent bushing replacement. Note: the "length" listed for an HL bushing refers to its overall length, not its length under the head.

Complete part numbers for all standard Head Liner Bushings are listed in the tables below.

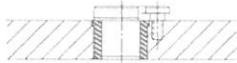
 [VIEW IN CATALOG PAGE](#)

LANGU

 [CONTACT CUSTOMER SERVICE](#)

Application Information

Head Liners are permanent bushings used to hold renewable drill bushings. The head provides resistance to axial loads, and is usually recessed in the plate.



ID Tolerance

Standard Liner ID Tolerance:

3/16 to 3/8"	+ .0001/+ .0004
7/16 to 5/8"	+ .0002/+ .0005
3/4"	+ .0003/+ .0006
7/8 to 1"	+ .0004/+ .0007
1-3/8"	+ .0006/+ .0010
1-3/4"	+ .0008/+ .0012
2-1/4"	+ .0010/+ .0015

OD Tolerance

Standard OD Tolerance:

1/2"	+ .0017/+ .0014
3/4 to 1"	+ .0018/+ .0015
1-3/8"	+ .0022/+ .0018
1-3/4"	+ .0023/+ .0019
2-1/4 to 2-3/4"	+ .0025/+ .0021
3 to 4"	+ .0028/+ .0023
4-1/4 to 5"	+ .0030/+ .0025

Unground OD Tolerance:

QUANTITY	PART NO.	ID	OD	LENGTH	DIA	G	
	HL-32-5	5/16	1/2	5/16	5/8	3/32	
	HL-32-6	5/16	1/2	3/8	5/8	3/32	
	HL-32-8	5/16	1/2	1/2	5/8	3/32	
	HL-32-12	5/16	1/2	3/4	5/8	3/32	
	HL-32-16	5/16	1/2	1	5/8	3/32	
	HL-32-22	5/16	1/2	1-3/8	5/8	3/32	
	HL-48-5	1/2	3/4	5/16	7/8	3/32	
	HL-48-6	1/2	3/4	3/8	7/8	3/32	
	HL-48-8	1/2	3/4	1/2	7/8	3/32	
	HL-48-12	1/2	3/4	3/4	7/8	3/32	
	HL-48-16	1/2	3/4	1	7/8	3/32	
	HL-48-22	1/2	3/4	1-3/8	7/8	3/32	
	HL-48-24	1/2	3/4	1-1/2	7/8	3/32	LANGU
	HL-48-28	1/2	3/4	1-3/4	7/8	3/32	
	HL-48-34	1/2	3/4	2-1/8	7/8	3/32	
	HL-64-8	3/4	1	1/2	1-1/8	1/8	
	HL-64-12	3/4	1	3/4	1-1/8	1/8	
	HL-64-16	3/4	1	1	1-1/8	1/8	
	HL-64-22	3/4	1	1-3/8	1-1/8	1/8	
	HL-64-24	3/4	1	1-1/2	1-1/8	1/8	
	HL-64-28	3/4	1	1-3/4	1-1/8	1/8	
	HL-64-34	3/4	1	2-1/8	1-1/8	1/8	
	HL-64-40	3/4	1	2-1/2	1-1/8	1/8	
	HL-64-48	3/4	1	3	1-1/8	1/8	
	HL-88-8	1	1-3/8	1/2	1-1/2	1/8	
	HL-88-12	1	1-3/8	3/4	1-1/2	1/8	
	HL-88-16	1	1-3/8	1	1-1/2	1/8	
	HL-88-22	1	1-3/8	1-3/8	1-1/2	1/8	
	HL-88-24	1	1-3/8	1-1/2	1-1/2	1/8	
	HL-88-28	1	1-3/8	1-3/4	1-1/2	1/8	
	HL-88-34	1	1-3/8	2-1/8	1-1/2	1/8	
	HL-88-40	1	1-3/8	2-1/2	1-1/2	1/8	
	HL-88-48	1	1-3/8	3	1-1/2	1/8	
	HL-112-12	1-3/8	1-3/4	3/4	1-7/8	3/16	
	HL-112-16	1-3/8	1-3/4	1	1-7/8	3/16	
	HL-112-22	1-3/8	1-3/4	1-3/8	1-7/8	3/16	
	HL-112-24	1-3/8	1-3/4	1-1/2	1-7/8	3/16	
	HL-112-28	1-3/8	1-3/4	1-3/4	1-7/8	3/16	
	HL-112-34	1-3/8	1-3/4	2-1/8	1-7/8	3/16	

LANGU