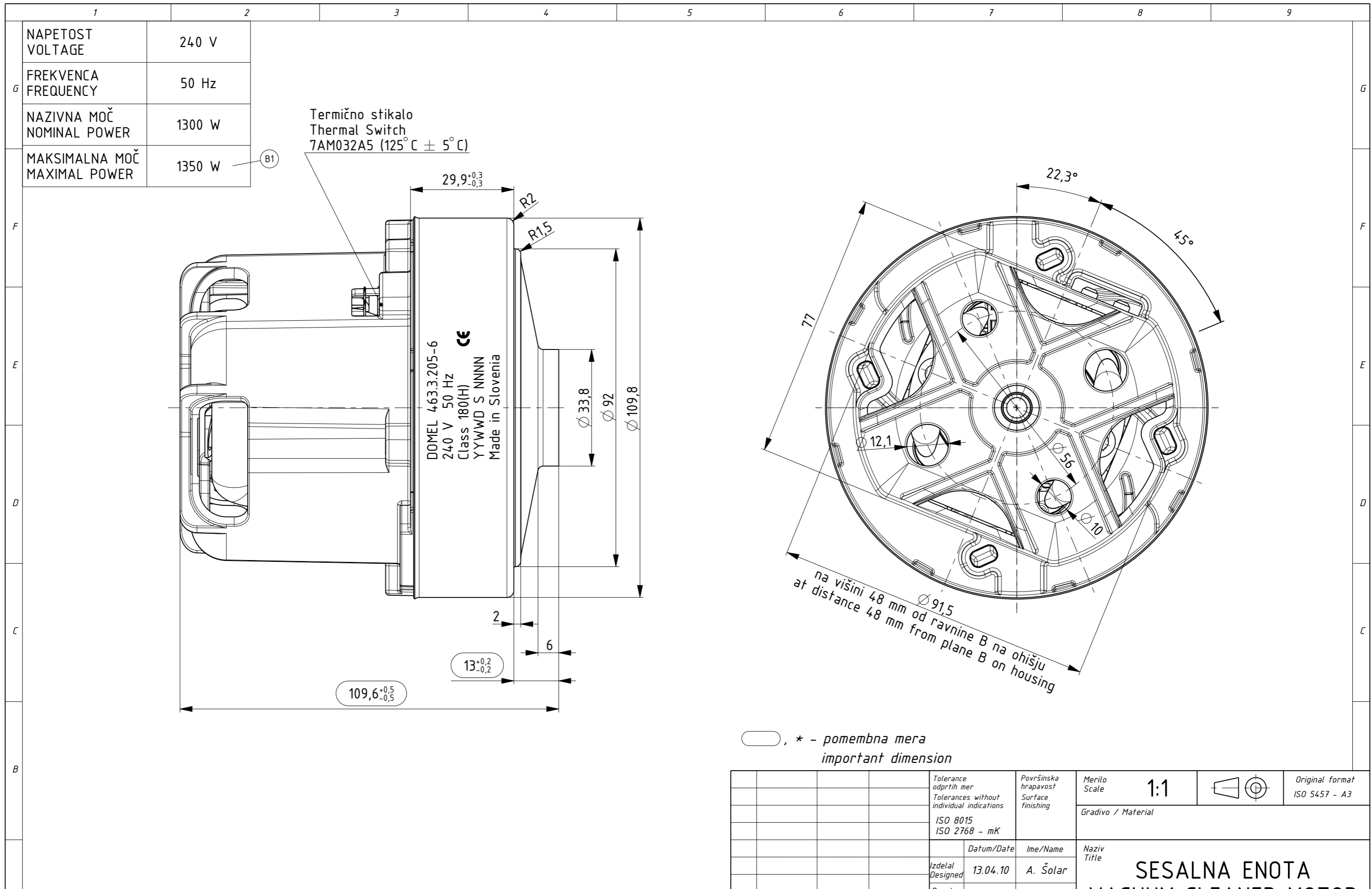


Izdelano s CAD/ProEngineer - ročno spreminjanje ni dovoljeno! Vsak prenos tretjim osebam ali uporaba v nedogovorjene namene ni dovoljena po zakonu o avtorskih pravicah. Made with CAD/ProEngineer - changing is not allowed! Any unauthorized copying of this drawing or unauthorized distribution of the information contained herein is prohibited.



NAPETOST VOLTAGE	240 V
FREKVENCA FREQUENCY	50 Hz
NAZIVNA MOČ NOMINAL POWER	1300 W
MAKSIMALNA MOČ MAXIMAL POWER	1350 W

Termično stikalo  
Thermal Switch  
7AM032A5 (125°C ± 5°C)

DOMEL 463.3.205-6  
240 V 50 Hz  
Class 180(H)  
YYWWD S NNNN  
Made in Slovenia

OSNOVNE ZNAČILNOSTI		TYPICAL CHARACTERISTICS	
IZVEDBA	ENOSTOPENJSKA	FAN SYSTEM	SINGLE STAGE
ULEŽAJENJE	DVA KROGLIČNA LEŽAJA	BEARINGS	DUAL BALL
VRSTA PRETOKA	SKOZI MOTOR	DISCHARGE	THRU FLOW
SMER VR TENJA	DESNA	DIRECTION OF ROTATION	CW

○, \* - pomembna mera  
important dimension

Tolerance odprtih mer Tolerances without individual indications ISO 8015 ISO 2768 - mK				Površinska hrapavost Surface finishing		Merilo Scale <b>1:1</b>		Original format ISO 5457 - A3	
Datum/Date				Ime/Name		Gradivo / Material			
Izdelal Designed				13.04.10		A. Šolar		Naziv Title	
Pregl. Verified				09.01.12		J. Rihtaršič		SESALNA ENOTA VACUUM CLEANER MOTOR	
Ozn. Mark				Št. obvestila Nr. of notice		Datum Date		Ime Name	
B1				10129		09.01.12		T. Čemažar	
A0				9395		13.04.10		A. Šolar	
DOMEL®				Otoki 21, 4228 Železniki, Slovenija		Koda Code		463.3.205-6	
								List Sheet 3+	
								Stran Page 1	
								4633205006_SESALNA_ENOTA	